

**LEGEND :**

**PROPOSED**

- RESIDENTIAL
- COMMERCIAL
- INDUSTRIAL
- PUBLIC- SEMIPUBLIC
- PUBLIC UTILITY
- RECREATIONAL
- TRANSPORTATION
- BUFFER ZONE
- GREEN BELT
- AGRICULTURE
- RIVER / NALA/ WATER BODIES
- EXISTING ROAD
- PROPOSED ROAD
- RESERVATION
- BROAD GAUGE RLY. LINE
- MIRAJ INNER BOUNDARY
- REVENUE BOUNDARY
- REVENUE SURVEY NO.
- PLANNING AREA
- PLANNING SECTOR BOUNDARY

- MK - MANGAL KARYALAY
- CH - COMMUNITY HALL
- KR - KHOKA RESETTLEMENT
- SC - SHOPPING CENTRE
- VM - VEGETABLE MARKET
- JB - JANTA BAZAR
- PS - PRIMARY SCHOOL
- HS - HIGH SCHOOL
- PG - PLAY GROUND
- ON - OCTROI NAKA
- P - PARKING
- BS - BUS STOP
- MT - MSEDTR
- PHC - PRIMARY HEALTH CENTRE
- MH - MATERNITY HOME
- CPG - CHILDREN PLAY GROUND
- TW - TOWN HALL
- PT - PUBLIC TOILET
- L.F.S.P. - LAND FOR SWASTHYA PRATHISHTHAN

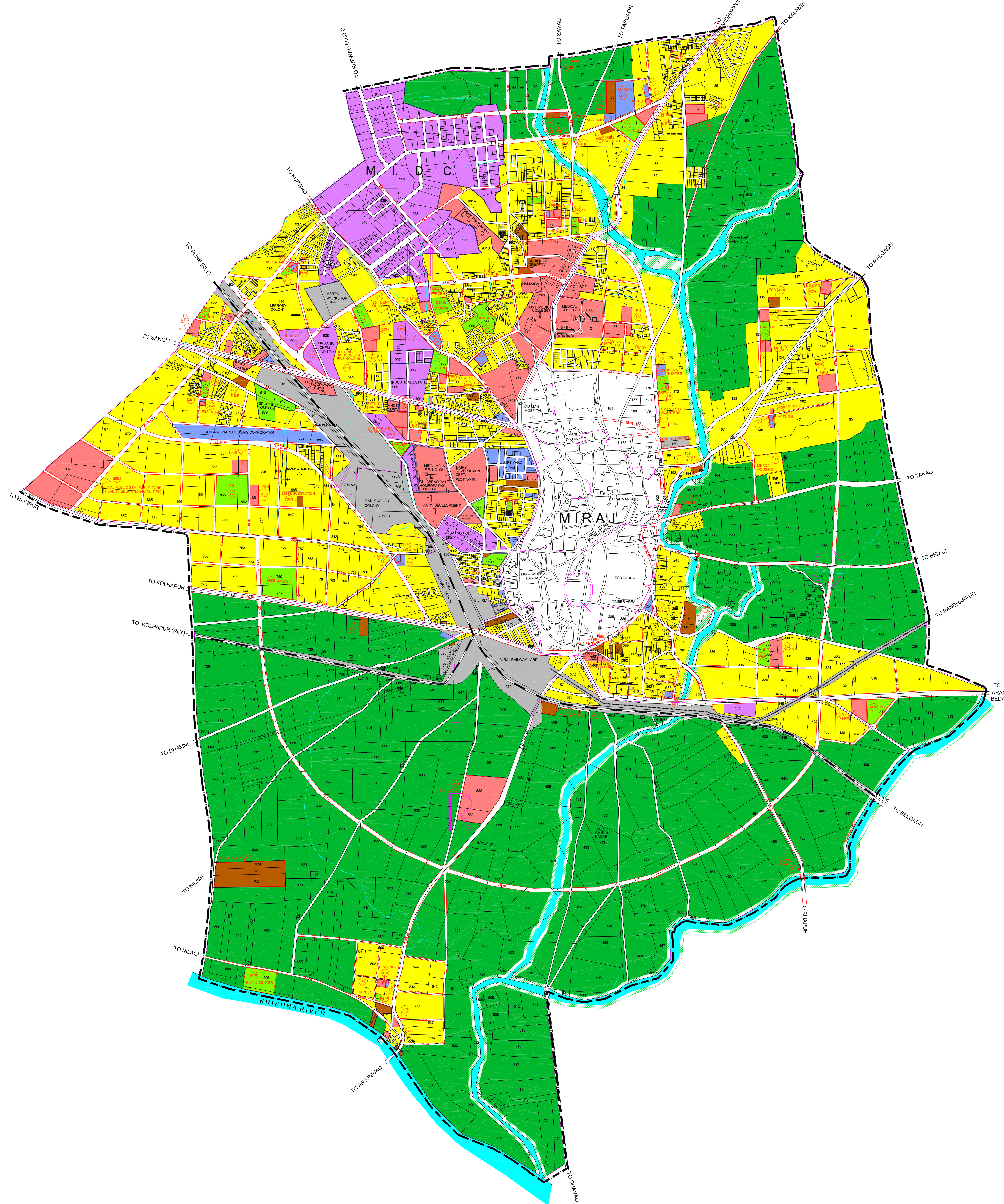
<b>CONSULTANT - Dalal Mott MacDonald</b>	
<b>DIV. DIRECTOR</b>	Vijay Bansal
<b>TEAM LEADER</b>	D. G. Parab
<b>TOWN PLANNING OFFICER</b>	D. G. Parab
<b>COMMISSIONER (SMKMC)</b>	Shri. Milind Mhatrekar, IAS
<b>MAYOR (SMKMC)</b>	Shri. Kishor Shaha

**TITLE:**  
**DRAFT DEVELOPMENT PLAN FOR**  
**SMKMC (U/S 26 OF MRTP ACT 1966)**  
**MIRAJ OUTER**

**CLIENT:**  
**SANGLI, MIRAJ AND KUPWAD**  
**MUNICIPAL CORPORATION**

<b>REV. NO</b>	4	<b>CHECKED</b>	S. Prasad Kumar	<b>MAP NO.</b>	1357/ MRU/ OUTER / 1
<b>DATE</b>	29/12/2004	<b>FILE NAME</b>	C:\MRU\ OUTER\ DRAFT.PDF		

**SUBMITTED BY:**  
**Dalal Mott MacDonald**  
 (Formerly Dalal Consultants And Engineers Ltd.)  
 44, Dr. B.C. Thacker Marg  
 Worli, Mumbai-400 018, India  
 Tel : +91-22-2493 4821, 2469 3959  
 Fax : +91-22-2495 0539  
 Email: mumbai@dmotmcd.com



This drawing and the design it covers are the property of DALAL CONSULTANTS AND ENGINEERS LIMITED. They are merely loaned and on the borrower's express agreement that they will not be reproduced, copied, loaned, exhibited or use except in the limited way and private use permitted by any written consent by the lender to the borrower.